

Resident Room



Beds



JOERNS CARE 100 ELECTRIC BED

The Joerns Care 100 bed is the best low height bed on the market today for the price. The Care 100 bed model offers value and function without compromising resident or caregiver safety by featuring Joerns tubular frame construction, which is designed to provide a sturdier structure for resident safety. The Care 100's low height provides fall safety for residents at risk of falling and the Care 100 also meets all of the latest bed entrapment guidelines. Joerns' proven grid system deck surface provides ultimate surface support for the resident, air flow around the mattress system and easy to clean openings. Immobilizing legs keep the bed stable and secure for resident transfers at any height but convert to a mobile version in the low height to allow the bed to be moved easily if required. Other features include ultra quiet DC motors, choice of side rail options, baseboard wall bumper, four corner mattress stops, laminate head and footboards in a choice of shapes and colours and an 8" to 26" travel range. Bed comes standard with a rail pendant holder but an optional pendant holder for mounting on the head board is available. The head board pendant holder can be mounted on the resident side of the head board for use when rails are removed from the bed and a location to store the hand control is needed or can be mounted on the back side of the head board for use when you need to hide the hand control away from the resident. 450lb weight capacity. 1 Year Warranty on Electrical and 15 Years on Steel Frame.

SPECIFICATIONS

OVER-ALL LENGTH - 85.5" OVER-ALL WIDTH (RAILS UP) - 41" DECK SURFACE - 35"x80"
 DECK HEIGHT LOW POSITION - 8.75" DECK HEIGHT HIGH POSITION - 26"

ITEM #

SPFC10080HR
 SPFCFBCTRL
 SPFN353AL
 SPFN105

DESCRIPTION

CARE 100 ELECTRIC BED, 80" DECK, HEAD SECTION RAILS
 FOOTBOARD CONTROL OPTION for CARE 100 BED
 4" BED LENGTH EXTENSION KIT
 PENDANT HOLDER FOR HEAD BOARD (RAIL HOLDER COMES STANDARD)

OPTIONS:



Optional Footboard Control Panel



Optional Pendant Holder for Head Board

Beds



JOERNS EASY CARE RIL ELECTRIC LOW HEIGHT BED

The new Joerns EasyCare® RIL bed provides best in class quality and features for a variety of your resident care needs while meeting your facility's budgetary concerns. The special Toroidal architecture engineering of the bed's steel frame is up to 30 times stronger than standard angle iron. The EasyCare adjustable low height bed has a proven grid-style sleep surface that provides security for resident positioning, air flow around the mattress system and easy to clean openings. The EasyCare bed is on stable legs at all travel heights and only mobile in the low position for those facilities where great stability is desired at all care heights. Other features include ultra quiet DC



motors, baseboard wall bumper; four corner mattress stops, choice of side rail options, laminate head and footboards in a choice of shape and color; and a 7" to 30" travel range. Bed comes standard with a rail pendant holder but an optional pendant holder for mounting on the head board is available. The head board pendant holder can be mounted on the resident side of the head board for use when rails are removed from the bed and a location to store the hand control is needed or can be mounted on the back side of the head board for use when you need to hide the hand control away from the resident. 500lb weight capacity. 4 year warranty on electrical and 15 years on the steel frame.

SPECIFICATIONS

OVER-ALL LENGTH - 85.5" for 80" deck and 82" for 76" deck
 DECK HEIGHT LOW POSITION - 7"
 DECK SURFACE - 35"x80" and 35"x76"

OVER-ALL WIDTH (RAILS UP) - 41"
 DECK HEIGHT HIGH POSITION - 30"

ITEM #

- SPFECRIL76HR
- SPFECRIL80HR
- SPFECRILXW76HR
- SPFECRILXW80HR
- SPFECFBCTRL
- SPFN301AL
- SPFN342AL
- SPFN106

DESCRIPTION

- EASYCARE RIL BED, 76" DECK, HEAD SECTION RAILS
- EASYCARE RIL BED, 80" DECK, HEAD SECTION RAILS
- EASYCARE RIL BED, 76" DECK, 42" EXPANDABLE WIDTH, HEAD SECTION RAILS
- EASYCARE RIL BED, 80" DECK, 42" EXPANDABLE WIDTH, HEAD SECTION RAILS
- FOOTBOARD CONTROL OPTION for EASYCARE BED
- 4" BED LENGTH EXTENDER for NEW STYLE EASYCARE RIL BED
- 4" BED LENGTH EXTENDER for OLD STYLE EASYCARE 5 BED
- PENDANT HOLDER FOR HEAD BOARD (RAIL HOLDER COMES STANDARD)

OPTIONS:



Optional Footboard Control Panel



Optional 4" Bed Length Extender



Optional 42" Expandable Width



Optional Pendant Holder for Head Board

Resident Room



Beds

JOERNS EASY CARE RAH ELECTRIC LOW HEIGHT BED

The new Joerns EasyCare® RAH bed provides best in class quality and features for a variety of your resident care needs while meeting your facility's budgetary concerns. The EasyCare adjustable low height bed has a proven grid-style sleep surface that provides security for resident positioning, air flow around the mattress system and easy to clean openings. The special Toroidal architecture engineering of the bed's steel frame is up to 30 times stronger than standard angle iron. The new UltraLock system is standard and allows the bed to be mobile at any height with an easy operating locking system. Other features include ultra quiet DC motors, baseboard wall bumper, four corner mattress stops, choice of side rail options, laminate head and footboards in a choice of shape and color; 7" to 30" travel range. Bed comes standard with a rail pendant holder but an optional pendant holder for mounting on the headboard is available. The headboard pendant holder can be mounted on the resident side of the headboard for use when rails are removed from the bed and a location to store the hand control is needed or can be mounted on the back side of the headboard for use when you need to hide the hand control away from the resident. 500lb weight capacity, 4 year warranty on electrical and 15 years on the steel frame.



SPECIFICATIONS

OVER-ALL LENGTH - 85.5" for 80" deck and 82" for 76" deck
 DECK HEIGHT LOW POSITION - 7"
 DECK SURFACE - 35"x80" and 35"x76"

OVER-ALL WIDTH (RAILS UP) - 41"
 DECK HEIGHT HIGH POSITION - 30"

ITEM

SPFECRAH76HR
 SPFECRAH80HR
 SPFECRAHXW76HR
 SPFECRAHXW80HR
 SPFECFBDCTRL
 SPFN301AL
 SPFN342AL
 SPFN106

DESCRIPTION

EASYCARE RAH BED, 76" DECK, HEAD SECTION RAILS
 EASYCARE RAH BED, 80" DECK, HEAD SECTION RAILS
 EASYCARE RAH BED, 76" DECK, 42" EXPANDABLE WIDTH, HEAD SECTION RAILS
 EASYCARE RAH BED, 80" DECK, 42" EXPANDABLE WIDTH, HEAD SECTION RAILS
 FOOTBOARD CONTROL OPTION for EASYCARE BED
 4" BED LENGTH EXTENDER for NEW STYLE EASYCARE RAH BED
 4" BED LENGTH EXTENDER for OLD STYLE EASYCARE 7 BED
 PENDANT HOLDER FOR HEAD BOARD (RAIL HOLDER COMES STANDARD)

OPTIONS:



Optional Footboard Control Panel



Optional 4" Bed Length Extender

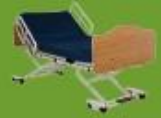


Optional 42" Expandable Width



Optional Pendant Holder for Head Board

Beds



Resident Room



JOERNS ULTRA CARE XT BARIATRIC 42" WIDE ELECTRIC LOW HEIGHT BED

The revolutionary UltraCare® XT is one bed with the ability to adapt to many resident care environments. Through a remarkable combination of performance, function, and style, the UltraCare XT can be easily transformed to fit any configuration or room. The UltraCare XT adjustable low height bed features the special grid-style sleep surface and Toroidal architecture engineering like on the EasyCare series of beds. The new UltraLock system is standard and allows the bed to be mobile at any height with an easy operating locking system. AdvanceCare positioning allows for Comfort Chair and Trendelenburg positioning for extra comfort and better circulation. Bed width extension kits transform the bed in to a 42" wide bed for heavier care. Other features include ultra quiet DC motors, baseboard wall bumper, four corner mattress stops, choice of side rail options, laminate head and footboards in a choice of shape and color, 7" to 30" travel range, 500lb weight capacity, 5 year warranty on electrical and 15 years on the steel frame.

SPECIFICATIONS:

OVER-ALL LENGTH - 85.5"

DECK HEIGHT LOW POSITION - 7"

DECK SURFACE - 42"x80"

OVER-ALL WIDTH (RAILS UP) - 47"

DECK HEIGHT HIGH POSITION - 30"

ITEM #

SPFUCXT4280HR

DESCRIPTION

ULTRACARE XT BARIATRIC 42" WIDE BED, 80" DECK, HEAD SECTION RAILS



Standard AdvanceCare Positioning



Standard Footboard Control Panel



Beds

Resident Room



TRI-FLEX II 1000lb CAPACITY BARIATRIC ELECTRIC BED

The Tri-Flex II 1000lb capacity bed was specifically designed to address bariatric needs of residents weighing up to 1000lbs or needing extra bed width up to 54". The Tri-Flex II beds standard width of 37" can be expanded to 48" or all the way to 54". The bed features Electric Hi-Low, Trendelenberg and Reverse Trendelenberg, Full Head Gatch and Full Knee Gatch positioning. Comes standard with head section rails, head and footboards, CPR release and Battery Back up. Available options are built in digital scale, electric drive system for transporting bed with weight in down the halls, 1000lb capacity foam mattress, foot section rails and 450lb capacity trapeze. The Tri-Flex bed folds to a dimension of 32" wide x 75" high x 47" long so that it can be easily transported through doorways.

SPECIFICATIONS:

DECK PLATFORM - 86" length x 37" width or 48" length x 54" width

OVERALL - 94" length x 41" width or 50" length x 63" width

ITEM

SPF63398B
 SPF63187
 SPF63410
 SPF63151
 SPF63200
 SPF63296B
 SPF63153B

DESCRIPTION

TRI-FLEX BED w/ HEAD RAILS, BOARDS, BATTERY BACK UP
 TRI-FLEX PRESSURE REDUCING MATTRESS 37" TO 48" WIDTH
 TRI-FLEX PRESSURE REDUCING MATTRESS 37" TO 54" WIDTH
 DIGITAL SCALE OPTION
 IMPULSE WHEEL DRIVE SYSTEM
 TRAPEZE KIT FOUR CORNER
 FOOT SECTION RAILS, ROLL OUT

Head & Footboard / Siderail Choices



Resident Room

STANDARD LAMINATE BOARDS



Avalon



Classical



Traditional

All beds come with the standard laminate boards as pictured. Three different shapes are available (Avalon, Traditional, and Classical). The boards feature easy to clean laminate surfaces, pvc t-mold edging and a variety of colours to choose from.

OPTIONAL WOOD VENEER BOARDS

Upgrade any of the beds to a more elegant and homelike feel with the different wood veneer boards available. All boards are stained to match any of the standard laminates listed and finished with a high end lacquer to protect the product for years to come.



Amherst Wood Veneer
SPFAMWVBD



Classics Wood Veneer
SPFCLVBD

STANDARD LAMINATE COLOUR CHOICES



Warm Walnut



Spiced Cherry



Millwork Cherry



Quartered Oak



Natural Maple

Note: Colours shown are limited by printing capabilities. Actual laminate may vary slightly. Contact your sales representative for an actual laminate sample if an exact colour is needed.



Siderail Choices



HEAD SECTION RAILS (STANDARD - HR)

These rails connect to the head section main frame of the bed and move up and down with the head section whenever it is gatched so they provide safety support at every angle. Top of rail is covered with a vinyl cap for protection against the metal rail. Meets all CSA/FDA bedrail entrapment guidelines.



SOFTCARE SIDE RAILS (OPTIONAL - SR)

Our SoftCare rail has a rubberized coating covering the metal parts of the rail for comfort and protection. Similar to our head section rails, these rails connect to the head section of the bed and move up & down whenever it is gatched. Meets all CSA/FDA bedrail entrapment guidelines.



ASSIST HANDLES (OPTIONAL - AH)

Ergonomically designed to assist residents in and out of bed.

Mattresses

**PREVAMATT DELUXE FOAM SUPPORT MATTRESS**

The PrevaMatt Deluxe features Visco Memory foam in the slope heel section and die cut high density foam in the torso and head sections. Incorporates a sloped heel section to redistribute pressure in the delicate heel and lower leg area. Firm perimeter foam provides added stability during resident transfer and helps resident safety by preventing entrapment between mattress and rails. Strategically located cuts in mattress base promotes easier flexing during bed frame articulation which reduces wear and tear on mattress/cover and prolongs mattress life. Easy to clean cover comes standard in four way stretch material for optimum comfort & pressure relief. Available with optional built up side bolsters. Designed for moderate to high risk patients. All mattresses have a knit fire sleeve over the foam core to meet the strictest flame and fire retardant codes and meets or exceeds the new CAN/ULC-S137 standard.

SPECIFICATIONS

OVER-ALL LENGTH - 76", 80" or 84"

THICKNESS - 6" (8" with Side Bolsters)

WARRANTY - 7 Years on Core, 2 Years on Cover

OVER-ALL WIDTH - 35"

WEIGHT CAPACITY - 500lbs

ITEM #

SPFPREVADX76

SPFPREVADX80

SPFPREVADX84

SPFPREVADX4280

SPFPREVADX76SB

SPFPREVADX80SB

SPFPREVADX84SB

DESCRIPTION

PREVAMATT DELUXE SUPPORT SURFACE, 35" x 76"

PREVAMATT DELUXE SUPPORT SURFACE, 35" x 80"

PREVAMATT DELUXE SUPPORT SURFACE, 35" x 84"

PREVAMATT DELUXE SUPPORT SURFACE, 42" X 80"

PREVAMATT DELUXE SUPPORT SURFACE w/SIDE BOLSTERS, 35" x 76"

PREVAMATT DELUXE SUPPORT SURFACE w/SIDE BOLSTERS, 35" x 80"

PREVAMATT DELUXE SUPPORT SURFACE w/SIDE BOLSTERS, 35" x 84"

Resident Room



Mattresses



PREVAMATT ELITE FOAM SUPPORT MATTRESS

The PrevaMatt Elite features a full Visco Memory foam topper with cross cut technology to provide superior pressure relief. Incorporates a sloped heel section to redistribute pressure in the delicate heel and lower leg area. Firm perimeter foam provides added stability during resident transfer and helps resident safety by preventing entrapment between mattress and rails. Strategically located cuts in mattress base promotes easier flexing during bed frame articulation which reduces wear and tear on mattress/cover and prolongs mattress life. Easy to clean cover comes standard in four way stretch material for optimum comfort & pressure relief. Available with optional built up side bolsters. Designed for moderate to high risk patients. All mattresses have a knit fire sleeve over the foam core to meet the strictest flame and fire retardant codes and meets or exceeds the new CAN/ULC-S137 standard.

SPECIFICATIONS

OVER-ALL LENGTH - 76", 80" or 84"

THICKNESS - 6" (8" with Side Bolsters)

WARRANTY - 7 Years on Core, 2 Years on Cover

OVER-ALL WIDTH - 35"

WEIGHT CAPACITY - 500lbs

ITEM

SFFPREVAEL76

SFFPREVAEL80

SFFPREVAEL84

SFFPREVAEL4280

SFFPREVAEL76SB

SFFPREVAEL80SB

SFFPREVAEL84SB

DESCRIPTION

PREVAMATT ELITE SUPPORT SURFACE, 35" x 76"

PREVAMATT ELITE SUPPORT SURFACE, 35" x 80"

PREVAMATT ELITE SUPPORT SURFACE, 35" x 84"

PREVAMATT ELITE SUPPORT SURFACE, 42" x 80"

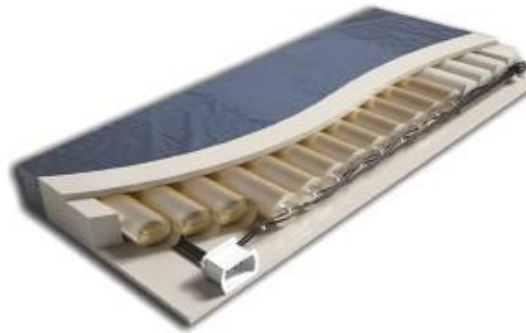
PREVAMATT ELITE SUPPORT SURFACE w/ SIDE BOLSTERS, 35" x 76"

PREVAMATT ELITE SUPPORT SURFACE w/ SIDE BOLSTERS, 35" x 80"

PREVAMATT ELITE SUPPORT SURFACE w/ SIDE BOLSTERS, 35" x 84"

Resident Room

Mattresses



P.R.O. MATT® PLUS CONVERTIBLE AIR FOAM MATTRESS

The P.R.O. Matt® Plus is a non-powered mattress replacement system featuring Pressure Redistribution Optimization (P.R.O.) Technology. With the addition of an optional control unit, the mattress provides powered immersion or alternating pressure therapy, allowing the use of one mattress for both pressure ulcer prevention and treatment. The unique P.R.O. Technology design requires no adjustments or manual inflation. The mattress features a sophisticated internal hosing and valve system that is invisible to the caregiver and patient, but enables the surface to automatically adjust to each patient's weight and body profile. In the non-powered mode, the P.R.O. Matt Plus is indicated for prevention through Stage II pressure ulcers. With the addition of an optional control unit and based on individual patient assessment, the P.R.O. Matt Plus can be used for the treatment of uncomplicated Stage III or IV pressure ulcers. Maximum weight capacity 500lbs. Warranty: Five-years, non-prorated; Cover: One-year.

MATTRESS FEATURES AND BENEFITS:

- Four-zone system (head, shoulder, torso and foot) inner air core reproduces the surface pressure profile of a therapeutic low air loss mattress
- One-inch viscoelastic topper enhances pressure redistribution and patient comfort
- Surrounding firm perimeter provides stability during patient care & Patient safety by eliminating gaps between frames and siderails
- Horizontal air tubes are superior to other manufacturers vertical tubes, as they provide better pressure relief & do not kink if bed is gatched
- Self-calibrating design needs no manual inflation
- Recovery-5® stretch cover is standard, waterproof & is a low friction and low shear surface

SPECIFICATIONS:

DIMENSIONS	7.5"w x 12.25"h x 5.5"d
COMFORT SETTINGS	5
CYCLE TIMES	5, 10, 15 Minutes
MODES OF OPERATION	Three - Autofirm, Alternating and Therapy
LOCKOUT	Yes

ITEM

SPFFPROMATT80
SPFFPROMATT4280
SPFES2

SPFES2 CONTROL UNIT

PROMATT PLUS CONVERTIBLE AIR SURFACE 35" x 80"
PROMATT PLUS CONVERTIBLE AIR SURFACE 42" X 80"
ES2 CONTROL UNIT



Resident Room

Mattresses



Resident Room



PRIMA-GEL DELUXE MATTRESS

The Prima-Gel Deluxe Mattress combines the comfort and pressure reduction of foam therapeutic mattress with the pressure relief and temperature regulation of gel. In this unique process our therapeutic foam core mattress is covered with a 3/4" pillow top gel honeycomb topper in the torso and foot section of the mattress to deliver unparalleled comfort, temperature control and wound prevention. The gel topper distributes the pressure more evenly over these regions resulting in better pressure interfaces. The honeycomb design of the gel allows for better temperature control around the sensitive pressure areas of the body. The Prima-Gel mattress has an incorporated high density foam perimeter to aid in transfers as well as to prevent bed entrapment. The special Recovery-5® Stretch cover provides fluid protection as well as a softer feel and stretch compared to regular nylon covered mattresses.

- 3/4" pillow top gel honeycomb comfort topper in torso and foot sections regulates temperature reducing perspiration and provides immersion for pressure reduction as well as increased comfort
- Dual density foam core with sloped heel zone to relieve pressure in sensitive foot region
- Firm perimeter border Allows for easier transfers and a firm supportive edge to meet all bed entrapment guidelines
- Recovery-5® cover ensures the mattress is protected from fluid while still allowing maximum immersion with its stretch capabilities

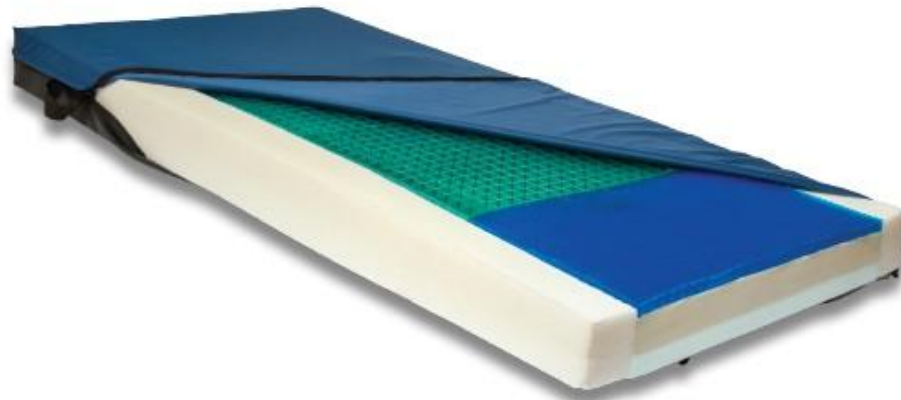
SPECIFICATIONS:

OVER-ALL LENGTH - 80"
THICKNESS - 6"
WARRANTY - 5 Years

OVER-ALL WIDTH - 35"
WEIGHT CAPACITY - 500lbs

ITEM #	DESCRIPTION
SPFFPRIMAGDX80	PRIMA-GEL DELUXE MATTRESS, 80"

Mattresses

**PRIMA-GEL ELITE MATTRESS**

The Prima-Gel Elite Mattress combines the comfort and pressure reduction of foam therapeutic mattress with the pressure relief and temperature regulation of gel. In the critical torso section of the Prima-Gel Elite mattress we incorporate a larger and deeper honeycomb gel design to provide maximum pressure relief and temperature control for Stage IV pressure ulcers. The sensitive heel section of the Prima-Gel Elite mattress is covered with a 3/4" pillow top gel honeycomb topper to deliver unparalleled comfort and wound prevention. The gel topper distributes the pressure more evenly over these regions resulting in better pressure interfaces. The honeycomb design of the gel allows for better temperature control around the sensitive pressure areas of the body. The Prima-Gel mattress has an incorporated high density foam perimeter to aid in transfers as well as to prevent bed entrapment. The special Recovery-5® Stretch cover provides fluid protection as well as a softer feel and stretch compared to regular nylon covered mattresses.

- Full Torso Section large honeycomb gel pad for maximum pressure relief, comfort and temperature control in critical pressure area of the mattress
- 3/4" pillow top gel honeycomb comfort topper in foot section provides immersion for pressure reduction as well as increased comfort
- Dual density foam core with sloped heel zone to relieve pressure in sensitive foot region
- Firm perimeter border Allows for easier transfers and a firm supportive edge to meet all bed entrapment guidelines
- Recovery-5® cover ensures the mattress is protected from fluid while still allowing maximum immersion with its stretch capabilities

SPECIFICATIONS:

OVER-ALL LENGTH - 80"
THICKNESS - 6"
WARRANTY - 5 Years

OVER-ALL WIDTH - 35"
WEIGHT CAPACITY - 500lbs

ITEM #

SPFFPRIMAGEL80

DESCRIPTION

PRIMA-GEL ELITE MATTRESS, 80"

Resident Room



Casegoods



EMBASSY SERIES CASEGOODS

The streamlined Embassy Collection embodies the elegant style of cool sophistication with the use of crisp, clean lines throughout the body of the case. Sweeping curves in the base and rounded drawer fronts add to the look and capability of the Embassy Collection to suit almost any décor. Vinyl wrap drawer front and top with laminate panel construction. Backs are vented to allow for air circulation within the cabinets. All cabinets come standard with two front glides and two rear casters. Available in a number of different wood finishes and handle options (see colour choice and options section).

ITEM #	DESCRIPTION
SPFEMBC1	EMBASSY VINYL WRAP BEDSIDE CABINET, 1 DRW-1DOOR, 21"w x 18"d x 29"h
SPFEMBC3	EMBASSY VINYL WRAP BEDSIDE CABINET, 3 DRW, 21"w x 18"d x 29"h
SPFEMD3	EMBASSY VINYL WRAP DRESSER, 3 DRW, 28"w x 18"d x 29"h
SPFEMD4	EMBASSY VINYL WRAP DRESSER, 4 DRW, 28"w x 18"d x 37"h
SPFEMDSK	EMBASSY VINYL WRAP DESK, 3 DRW/ OPEN SPACE, 48"w x 18"d x 29"h
SPFEMW2D	EMBASSY VINYL WRAP WARDROBE, 2 DOOR, 38"w x 25"d x 78"h
SPFEMW2D1D	EMBASSY VINYL WRAP WARDROBE, 2 DOOR 1 DRW, 38"w x 25"d x 78"h
SPFEMW2D2D	EMBASSY VINYL WRAP WARDROBE, 2 DOOR 2 DRW, 38"w x 25"d x 78"h

Casegoods



TRADITIONAL SERIES CASEGOODS

Our Traditional Series uses vinyl wrap construction to create a furniture line that closely resembles real wood but is durable and easy to clean. Raised paneling on door and drawer fronts and detailed edges, imitate the elegance of real wood cabinetry. Our vinyl wrap construction uses a unique thermal fusion process to ensure durability in the long-term care environment. All cabinets come standard with two front glides and two rear casters to make the cabinets easy to level and to manoeuvre. Backs are vented to allow for air circulation within the cabinets. Available in a number of different wood finishes and handle options (see colour choice and options section).

ITEM #	DESCRIPTION
SPFTRDBC1	TRADITIONAL VINYL WRAP BEDSIDE CABINET, 1 DRW-1DOOR, 21"w x 18"d x 29"h
SPFTRDBC3	TRADITIONAL VINYL WRAP BEDSIDE CABINET, 3 DRW, 21"w x 18"d x 29"h
SPFTRDD3	TRADITIONAL VINYL WRAP DRESSER, 3 DRW, 28"w x 18"d x 29"h
SPFTRDD4	TRADITIONAL VINYL WRAP DRESSER, 4 DRW, 28"w x 18"d x 37"h
SPFTRDDSK	TRADITIONAL VINYL WRAP DESK, 3 DRW/OPEN SPACE, 48"w x 18"d x 29"h
SPFTRDW2D	TRADITIONAL VINYL WRAP WARDROBE, 2 DOOR, 38"w x 25"d x 78"h
SPFTRDW2D1D	TRADITIONAL VINYL WRAP WARDROBE, 2 DOOR 1 DRW, 38"w x 25"d x 78"h
SPFTRDW2D2D	TRADITIONAL VINYL WRAP WARDROBE, 2 DOOR 2 DRW, 38"w x 25"d x 78"h



Resident Room



Casegoods



SHAKER SERIES CASEGOODS

Our Shaker Series uses vinyl wrap construction to create a furniture line that closely resembles real wood but is durable and easy to clean. Shaker paneling on door and drawer fronts and detailed edges, imitate the elegance of real wood cabinetry. Our vinyl wrap construction uses a unique thermal fusion process to ensure durability in the long-term care environment. All cabinets come standard with two front glides and two rear casters to make the cabinets easy to level and to manoeuvre. Backs are vented to allow for air circulation within the cabinets. Available in a number of different wood finishes and handle options (see colour choice and options section).

ITEM #	DESCRIPTION
SPFSKBC1	SHAKER VINYL WRAP BEDSIDE CABINET, 1 DRW-1DOOR, 21"w x 18"d x 29"h
SPFSKBC3	SHAKER VINYL WRAP BEDSIDE CABINET, 3 DRW, 21"w x 18"d x 29"h
SPFSKD3	SHAKER VINYL WRAP DRESSER, 3 DRW, 28"w x 18"d x 29"h
SPFSKD4	SHAKER VINYL WRAP DRESSER, 4 DRW, 28"w x 18"d x 37"h
SPFSKDSK	SHAKER VINYL WRAP DESK, 3 DRW/OPEN SPACE, 48"w x 18"d x 29"h
SPFSKW2D	SHAKER VINYL WRAP WARDROBE, 2 DOOR, 38"w x 25"d x 78"h
SPFSKW2D1D	SHAKER VINYL WRAP WARDROBE, 2 DOOR 1 DRW, 38"w x 25"d x 78"h
SPFSKW2D2D	SHAKER VINYL WRAP WARDROBE, 2 DOOR 2 DRW, 38"w x 25"d x 78"h

Casegoods



PRESTIGE SERIES CASEGOODS

The modern Prestige Collection has a lasting design and durability. The metal square tube base not only provides longevity, it adds a brilliant contrast in design. Vinyl wrap drawer front and top with laminate panel construction. Backs are vented to allow for air circulation within the cabinets. Available in a number of different wood finishes and epoxy coating finishes on the metal base.

ITEM

SPFPRBC1
 SPFPRBC3
 SPFPRD3
 SPFPRD4
 SPFPRW2D
 SPFPRW2D1D
 SPFPRW2D2D

DESCRIPTION

PRESTIGE VINYL WRAP BEDSIDE CABINET, 1 DRW-1DOOR, 20"w x 20"d x 30"h
 PRESTIGE VINYL WRAP BEDSIDE CABINET, 3 DRW, 20"w x 20"d x 30"h
 PRESTIGE VINYL WRAP DRESSER, 3 DRW, 32"w x 18"d x 27"h
 PRESTIGE VINYL WRAP DRESSER, 4 DRW, 32"w x 18"d x 35"h
 PRESTIGE VINYL WRAP WARDROBE, 2 DOOR, 37"w x 26"d x 72"h
 PRESTIGE VINYL WRAP WARDROBE, 2 DOOR 1DRW, 37"w x 26"d x 72"h
 PRESTIGE VINYL WRAP WARDROBE, 2 DOOR 2 DRW, 37"w x 26"d x 72"h



Resident Room



Casegood Options

STANDARD COLOUR WOOD GRAIN CHOICES FOR CASEGOODS



Warm Walnut



Spiced Cherry



Millwork Cherry



Oak



Natural Maple

Note: Custom colours are available for all cabinets but have a minimum order level. Contact your sales representative for details and minimum levels needed.

Colours shown are limited by printing capabilities. Actual laminate may vary slightly. Contact your sales representative for an actual laminate sample if an exact colour is needed.

STANDARD HANDLE CHOICES FOR CASEGOODS

All handles are available in nickel finish or brass finish.



D Pull



Transitional Pull



Crescent Pull



Bin Pull



Metal Knob

CASEGOOD OPTIONS



Lock Option
#SPFLOCK



Bedside Drawer Insert Option
#SPFDRWINSERT



Pull out Shelf Option
#SPFPOS

Overbed Tables



Resident Room



STANDARD OVERBED TABLE

Frame is available in brown epoxy (shown) or light beige epoxy. Please specify at time of ordering which colour choice. Adjusts in height from 29.5" to 45". Top Size: 15" x 30".

ITEM #	DESCRIPTION
SPFOBTNM	OVERBED TABLE, STANDARD, NATURAL MAPLE TOP
SPFOBTND	OVERBED TABLE, STANDARD, NATURAL OAK TOP
SPFOBTMC	OVERBED TABLE, STANDARD, MILLWORK CHERRY TOP
SPFOBTSC	OVERBED TABLE, STANDARD, SPICED CHERRY TOP
SPFOBTW	OVERBED TABLE, STANDARD, WALNUT TOP



SUPER DUTY OVERBED TABLE

A more heavy duty version of the standard overbed table. Supports up to 100lbs. Laminate top overbed table adjusts from 30" to 45" in height. Chrome U base with swivel nylon casters. Top Size: 18" x 32".

ITEM #	DESCRIPTION
SPFOBTSDNM	OVERBED TABLE, SUPER DUTY, NATURAL MAPLE TOP
SPFOBTSDND	OVERBED TABLE, SUPER DUTY, NATURAL OAK TOP
SPFOBTSDMC	OVERBED TABLE, SUPER DUTY, MILLWORK CHERRY TOP
SPFOBTSDSC	OVERBED TABLE, SUPER DUTY, SPICED CHERRY TOP
SPFOBTSDW	OVERBED TABLE, SUPER DUTY, WALNUT TOP



Resident Room Chairs



TUSCAN RESIDENT ROOM CHAIR

Solid wood frame with wrap around full upholstery on seat and back.

ITEM #	DESCRIPTION	YARDAGE
SPFTUSCAN	HIGH BACK CHAIR 24"w x 26"d x 41"h x 19"sh	Yrd-2.5



FLORENCE FLEX BACK RESIDENT ROOM CHAIR

High back is attached to frame by a strong, flexible metal which provides a slight flex motion to the back for comfort.

ITEM #	DESCRIPTION	YARDAGE
SPFFLORENCE	FLEX BACK CHAIR, High Back 24"w x 26"d x 42"h x 19"sh	Yrd-2



DRAKE RESIDENT ROOM CHAIR

High back chair is available with a full wrap upholstered seat and back or a wood show frame seat and back.

ITEM #	DESCRIPTION	YARDAGE
SPFDRAKE	HIGH BACK CHAIR - SHOW FRAME 24"w x 25"d x 41"h x 19"sh	Yrd-2.5
SPFDRAKEUPH	HIGH BACK CHAIR - FULL UPHOL 26"w x 25"d x 41"h x 19"sh	Yrd-3.5



Resident Room Chairs



Resident Room

LEGEND RESIDENT ROOM CHAIR

High back chair with fully upholstered frame. Seat is fixed in place with a small clean out between the seat and the back.

ITEM #	DESCRIPTION	YARDAGE
SPFLEGEND	HIGH BACK CHAIR 31"w x 30"d x 37"h x 20"sh	Yrd-4



ANTHONY RESIDENT ROOM CHAIR

High back chair with exposed wood front legs and clean out between seat and back. Available in a 36" high back or a 42" tall back design.

ITEM #	DESCRIPTION	YARDAGE
SPFANTHONY	HIGH BACK CHAIR 26"w x 27"d x 36"h x 19"sh	Yrd-2.75
SPFANTHONYTB	TALL BACK CHAIR 26"w x 27"d x 42"h x 19"sh	Yrd-3



TRISTAN RESIDENT ROOM CHAIR

Fully upholstered rolled arm with tapered wood legs.

ITEM #	DESCRIPTION	YARDAGE
SPFTRISTAN	HIGH BACK CHAIR 30"w x 37"d x 36"h x 19"sh	Yrd-6

